

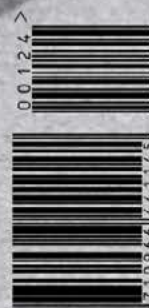
FRAMES

THE GREAT INDOORS

N°124 SEP — OCT 2018



THE NEW ECO-TRAVEL
Circular. Clever. Confident



8 710966144145
BX C19.95 DE C19.95 IT €14.95 CHF 30 UK £14.95 JP ¥3,570 KR ₩40,000

Faced with out-of-this-world scenarios, designers develop new technologies for inner and OUTER SPACE

A manned mission to the red planet and beyond comes with challenges that designers have never encountered before. Their task requires out-of-this-world problem-solving. Finding good solutions will no doubt drive the pursuit of innovation and create quantum leaps in the development of new technologies, and not just for use on distant planets. Space exploration also leads to significant technologies and applications beneficial to us earthlings.

An example is Black & Decker's cordless Dustbuster, a spinoff of the Apollo and Gemini missions. As the possibility of space tourism and human settlements on Mars draws closer – Elon Musk hopes to launch SpaceX as early as 2024 – we look at how product and interior designers are appropriating cosmic research for projects that relate to inner and outer space. – AT



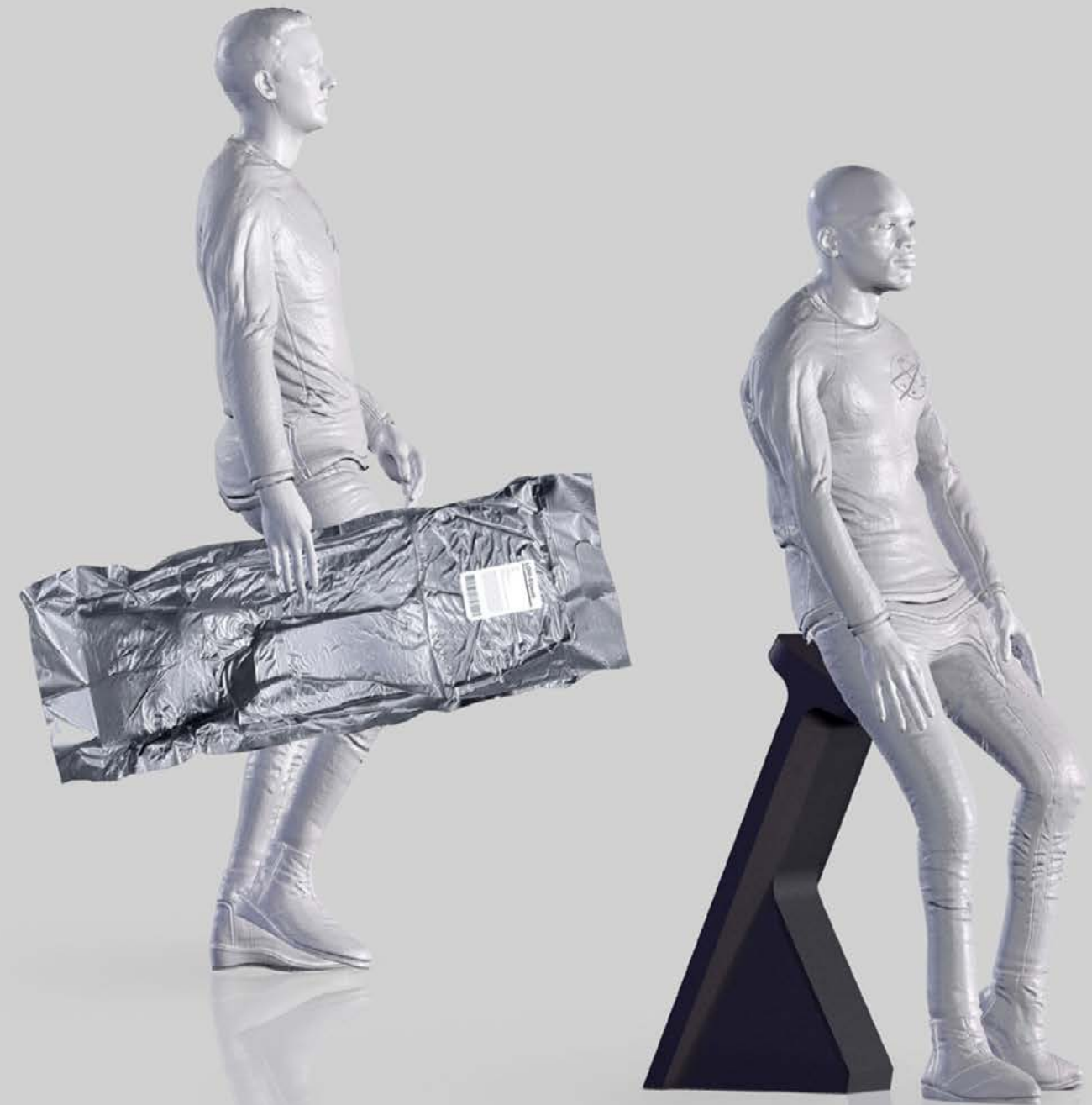
Courtesy of Ikea

In an attempt to assess the future needs of small-space living in urban and extraterrestrial settings, Ikea sent a team to the Mars Desert Research Station in Utah. The idea was to develop new solutions for use in extreme scenarios. The result is Rumtid, a sustainable (almost zero waste) collection that will be introduced in 2020. Rumtid products include lightweight furniture made of veneer rolled into hollow tubes. This flexible construction method allows for numerous configurations, because the tubes can be cut in different lengths and clamped together in various ways.

ikea.today

Thomas Missé's Mars Bar addresses the low-gravity environment that characterizes Mars – an atmosphere that leads to the loss of bone and muscle mass, as well as blood volume. The designer's solution is a chair that encourages a new way of sitting. A slightly imbalanced resting position gives rise to a degree of activity in the user's lumbar region and legs. The lightweight aluminium frame is covered in polyurethane foam and vacuum-packed for delivery to reduce its size and make it easy to transport.

thomasmisse.fr



Courtesy of Thomas Missé